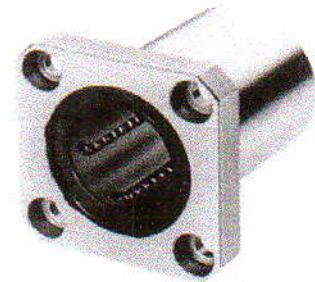


Linear bushing

Series LMK



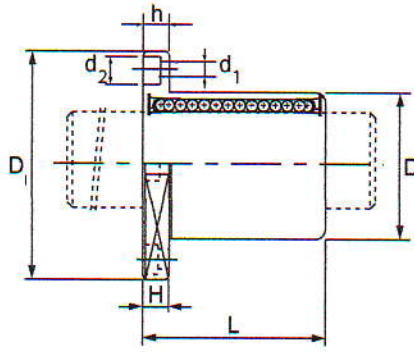
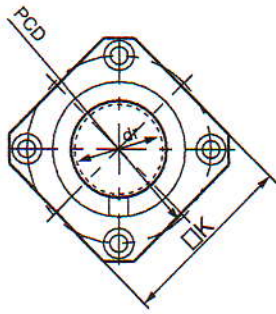
LMK

Dimension table . Dimension in mm

Cylindrical type Standard type	Number of ball rows	Weight g	Inscribed circle diameter		Outer diameter		Length		Flange diameter	
			dr	Tolerance	D	Tolerance	L	Tolerance	D1	Tolerance
LMK 6	4	18.5	6	0 -0.009	12	0	19	0 -0.2	28	0 -0.2
LMK 8	4	29	8		15	-0.011	24		32	
LMK 10	4	61	10		19	0	29		40	
LMK 12	4	56	12		21	0	30		42	
LMK 13	4	75	13		23	-0.013	32		43	
LMK 16	5	104	16		28		37		48	
LMK 20	5	145	20	0 -0.010	32	0	42	0 -0.3	54	0 -0.3
LMK 25	6	300	25		40	-0.016	59		62	
LMK 30	6	375	30	0 -0.012	45		64	0 -0.3	74	0 -0.3
LMK 35	6	692	35		52	0	70		82	
LMK 40	6	864	40		60	-0.019	80		96	
LMK 50	6	2020	50	-0.015	80		100	0 -0.3	116	0 -0.3
LMK 60	6	2520	60		90	-0.022	110		134	



Linear bushing type LMF has a built-in synthetic resin retainer to reduce running noise.
- Specify when seal type is needed.



K	H	PCD	Mounting hole d1 X d2 X h	Flang squareness μ m	Eccentricity (Max) μ m	Radial Clearance Tolerance μ m	Basic Load rating	
							C N	C ₀ N
22	5	20	3.4 X 6.5 X 3.1	12	12	-5	196	252
25	5	24	3.4 X 6.5 X 3.1	12	12	-5	252	382
30	6	29	4.5 X 8 X 4.1	12	12	-5	354	522
32	6	32	4.5 X 8 X 4.1	12	12	-5	391	568
34	6	33	4.5 X 8 X 4.1	12	12	-7	485	736
37	6	38	4.5 X 8 X 4.1	12	12	-7	736	1121
42	8	43	5.5 X 9.5 X 5.1	15	15	-9	820	1 301
50	8	51	5.5 X 9.5 X 5.1	15	15	-9	931	1 491
58	10	60	6.6 X 11 X 6.1	15	15	-9	1 491	2 612
64	10	67	6.6 X 11 X 6.1	20	20	-13	1 586	2 983
75	13	78	9 X 14 X 8.1	20	20	-13	2 052	3 819
92	13	98	9 X 14 X 8.1	20	20	-13	3 629	7 543
106	18	112	11 X 17.5 X 10.8	25	25	-13	4 474	9 500