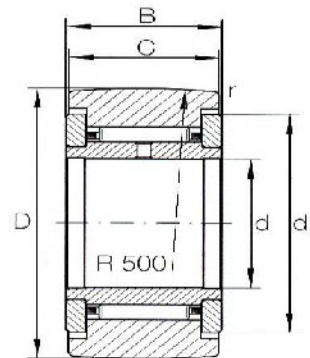
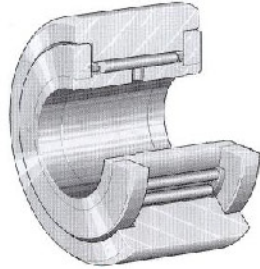




Yoke type track rollers



Dimension table . Dimensions in mm

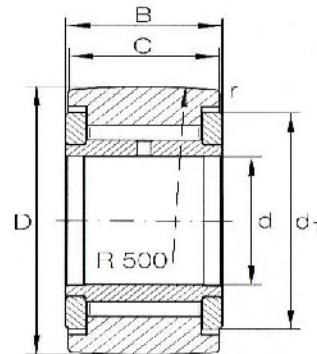
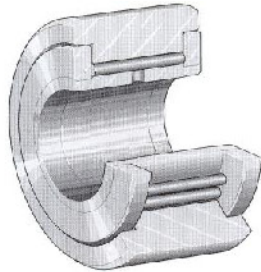
Outside diameter	Designation	Designation	Mass ≈ g	Dimensions						Basic load rating		Fatigue load P _{UW} N	Speed ¹⁾ n _{0 grease} min ⁻¹
				d	D	C	B	d ₁	r min.	dyn C _w N	stat C _{0w} N		
16	NATR 5	NATR 5 PP	14	5	16	11	12	12	0.15	2 992	3 135	389	13 300
19	NATR 6	NATR 6 PP	20	6	19	11	12	14	0.15	3 325	3 705	503	10 450
24	NATR 8	NATR 8 PP	41	8	24	14	15	19	0.30	5 225	6 080	845	7 125
30	NATR 10	NATR 10 PP	64	10	30	14	15	23	0.60	6 460	7 980	1 121	5 225
32	NATR 12	NATR 12 PP	71	12	32	14	15	25	0.60	6 555	8 360	1 159	4 275
35	NATR 15	NATR 15 PP	103	15	35	18	19	27	0.60	9 215	13 395	1 757	3 420
40	NATR 17	NATR 17 PP	144	17	40	20	21	32	1.00	10 355	14 725	1 909	2 755
47	NATR 20	NATR 20 PP	246	20	47	24	25	37	1.00	14 725	24 225	3 135	2 280
52	NATR 25	NATR 25 PP	275	25	52	24	25	42	1.00	19 475	25 175	3 192	1 710
62	NATR 30	NATR 30 PP	470	30	62	28	29	51	1.00	22 420	36 575	4 750	1 235
72	-	NATR 35 PP	635	35	72	28	29	58	1.10	24 225	42 275	5 434	950
80	-	NATR 40 PP	805	40	80	30	32	66	1.10	31 350	56 050	7 210	807
90	-	NATR 50 PP	960	50	90	30	32	76	1.10	30 400	56 050	7 220	617

- Bearing with lip seals (suffix PP)

permissible operating temperature: -30°C to + 100°C (continuous operation)



Yoke type track rollers



Dimension table . Dimensions in mm

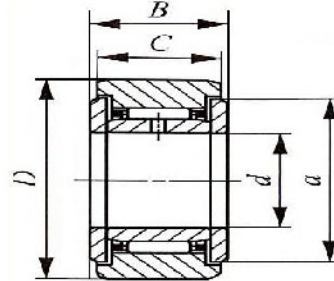
Outside diameter	Designation	Designation	Mass ≈ g	Dimensions						Basic load rating		Fatigue load P _{UW} N	Speed ¹⁾ n _{0 grease} min ⁻¹
				d	D	C	B	d ₁	r min	dyn C _w N	stat C _{0w} N		
16	NATV 5	NATV 5 PP	15	5	16	11	12	12	0.15	4 607	6 175	807	3 610
19	NATV 6	NATV 6 PP	21	6	19	11	12	14	0.15	5 225	7 505	978	2 945
24	NATV 8	NATV 8 PP	42	8	24	14	15	19	0.30	7 410	10 830	1 349	2 375
30	NATV 10	NATV 10 PP	65	10	30	14	15	23	0.60	9 025	13 870	1 729	1 995
32	NATV 12	NATV 12 PP	72	12	32	14	15	25	0.60	9 215	14 630	1 824	1 710
35	NATV 15	NATV 15 PP	105	15	35	18	19	27	0.60	12 160	21 850	2 755	1 520
40	NATV 17	NATV 17 PP	152	17	40	20	21	32	1.00	14 060	25 175	2 850	1 330
47	NATV 20	NATV 20 PP	254	20	47	24	25	37	1.00	19 570	39 900	4 940	1 235
52	NATV 25	NATV 25 PP	285	25	52	24	25	42	1.00	14 630	41 800	5 130	950
62	NATV 30	NATV 30 PP	481	30	62	28	29	51	1.00	19 475	58 900	7 315	807
72	-	NATV 35 PP	647	35	72	28	29	58	1.10	28 975	69 350	8 550	712
80	-	NATV 40 PP	890	40	80	30	32	66	1.10	38 950	85 500	10 640	617
90	-	NATV 50 PP	990	50	90	30	32	76	1.10	38 475	88 350	11 020	522

- Bearing with lip seals (suffix PP)

permissible operating temperature: -30°C to + 100°C (continuous operation)



Yoke type track rollers



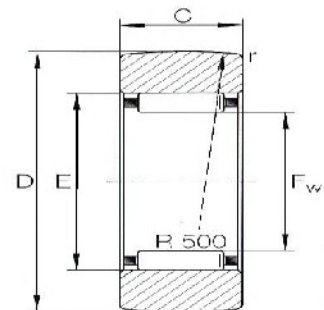
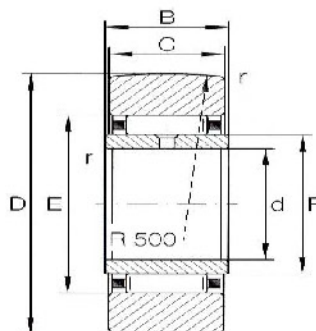
Dimension table . Dimensions in mm

Outside diameter	Cylindrical outer race	Mass g	Dimensions (mm)					Basic load ratings		Track load capacity N	Limiting speed min ⁻¹
			d	D	C	B	a	dyn C N	stat C ₀ N		
19	NAST 6 ZZ	24.5	6	19	13.8	14	14	3 914	4 322	3 353	19 000
24	NAST 8 ZZ	39	8	24	13.8	14	17.5	5 396	5 595	4 284	16 150
30	NAST 10 ZZ	65	10	30	15.8	16	23.5	9 215	9 186	6 517	14 250
32	NAST 12 ZZ	75	12	32	15.8	16	25.5	9880	10 355	6 982	12 350
35	NAST 15 ZZ	83	15	35	15.8	16	29.0	11685	13 585	7 638	9 500
40	NAST 17 ZZ	135	17	40	19.8	20	32.5	16 530	19 855	11 210	9 025
47	NAST 20 ZZ	195	20	47	19.8	20	38	18 240	23 275	13 110	8 075
52	NAST 25 ZZ	225	25	52	19.8	20	43	19 665	26 980	14 535	6 650
62	NAST 30 ZZ	400	30	62	24.8	25	50.5	28 785	43 130	20 995	5 225
72	NAST 35 ZZ	550	35	72	24.8	25	53.5	30 590	48 070	24 415	4 750
80	NAST 40 ZZ	710	40	80	25.8	26	61.5	33 915	58 045	28 785	3 800
85	NAST 45 ZZ	760	45	85	25.8	26	66.5	35 245	63 080	29 545	3 800
90	NAST 50 ZZ	830	50	90	25.8	26	76	36 765	68 210	32 300	3 325

- TN = plastic cage, permissible operating temperatures.
- 120°C continuously, 150°C temporarily, 180°C for short periods.
- F is the raceway diameter of the inner ring,
- f_w is the needle roller enveloping circle in the tolerance zone F6.
- The basic load ratings C and C₀ apply if the bearing outer ring (with cylindrical outside surface) is mounted in a housing bore with the normal rolling bearing fit. when used as a track roller the load ratings C_w and C_{ow} apply.
- With oil lubrication, the speed can be increased by approx 30%.



Yoke type track rollers



Dimension table . Dimensions in mm

Outside diameter	Without inner ring	Mass ≈ g	With inner ring	Mass ≈ g	Dimensions							Basic load rating		Fatigue limit load P _{UW} N	Speed ²⁾ n _{D grease} min ⁻¹
	Designation		Designation		D	d	F ¹⁾ F _w	B	C	E	r min.	dyn C _w N	stat C _{ow} N		
16	RSTO 5 TN	8.5	-	-	16	-	7	-	7.8	10	0.3	2 422	2 422	294	15 200
19	RSTO 6 TN	12.5	STO 6 TN	17	19	6	10	10	9.8	13	0.3	3 562	4 275	551	9 500
24	RSTO 8 TN	21	STO 8 TN	26	24	8	12	10	9.8	15	0.3	3 990	5 225	665	7 600
30	RSTO 10	42	STO 10	49	30	10	14	12	11.8	20	0.3	7 980	8 740	1 111	5 225
32	RSTO 12	49	STO 12	57	32	12	16	12	11.8	22	0.3	8 455	9 595	1 216	4 275
35	RSTO 15	50	STO 15	63	35	15	20	12	11.8	26	0.3	8 645	10 165	1 282	3 135
40	RSTO 17	88	STO 17	107	40	17	22	16	15.8	29	0.3	13 585	16 815	2 080	2 660
47	RSTO 20	130	STO 20	152	47	20	25	16	15.8	32	0.3	15 390	20 425	2 565	2 280
52	RSTO 25	150	STO 25	177	52	25	30	16	15.8	37	0.3	15 675	21 755	2 707	1 710
62	RSTO 30	255	STO 30	308	62	30	38	20	19.8	46	0.6	22 135	33 250	3 800	1 235
72	RSTO 35	375	STO 35	441	72	35	42	20	19.8	50	0.6	24 225	38 000	4 322	1 045
80	RSTO 40	420	STO 40	530	80	40	50	20	19.8	58	1.0	22 800	37 050	4 702	807
85	RSTO 45	453	STO 45	576	85	45	55	20	19.8	63	1.0	24 225	40 850	4 702	712
90	RSTO 50	481	STO 50	617	90	50	60	20	19.8	68	1.0	24 700	44 175	5 130	617

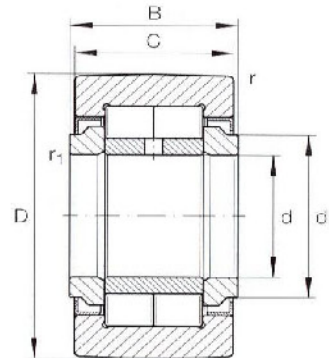
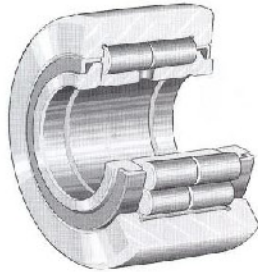
- TN = Plastic cage, permissible operating temperature: +120°C (continuous operation)

F = raceway diameter of the inner ring,

F_w = needle enveloping circle with tolerance zone F6.



Yoke type track rollers



Dimension table . Dimensions in mm

Outside diameter	Designation	Mass ≈ g	Dimensions							Basic load rating				Fatigue limit load P_{um} N	speed ¹⁾ N_D grease min^{-1}
			d	D	B	C	d_1	r min.	r_1 min.	dyn. C_w N	stat. C_{0w} N	$F_{r perm}$ N	$F_{or perm}$ N		
35	NUTR 15	99	15	35	19	18	20	0.6	0.3	14 250	15 960	8 170	15 960	2 109	6 175
40	NUTR 17	147	17	40	21	20	22	1.0	0.3	17 480	21 470	12 445	21 470	2 755	5 225
42	NUTR 15 42	158	15	42	19	18	20	0.6	0.3	17 195	20 805	20 805	20 805	2 755	6 175
47	NUTR 17 47	220	17	47	21	20	22	1.0	0.3	20 235	26 600	26 600	26 600	3 420	5 225
	NUTR 20	245	20	47	25	24	27	1.0	0.3	26 600	33 250	15 580	31 350	4 180	3 990
52	NUTR 20 25	321	20	52	25	24	27	1.0	0.3	29 925	38 950	36 575	38 950	4 940	3 990
	NUTR 25	281	25	52	25	24	31	1.0	0.3	27 550	35 625	16 435	32 775	4 465	3 230
62	NUTR 25 62	450	25	62	25	24	31	1.0	0.3	33 725	47 500	47 500	47 500	5 985	3 230
	NUTR 30	465	30	62	29	28	38	1.0	0.3	38 000	47 500	22 325	44 175	5 985	2 470
72	NUTR 30 72	697	30	72	29	28	38	1.0	0.3	45 125	60 800	60 800	60 800	7 695	2 470
	NUTR 35	630	35	72	29	28	44	1.1	0.6	42 275	57 000	30 400	57 000	7 220	1 995
80	NUTR 35 80	836	35	80	29	28	44	1.1	0.6	48 450	68 400	68 400	68 400	8 645	1 995
	NUTR 40	816	40	80	32	30	51	1.1	0.6	52 250	71 250	28 975	57 000	8 930	1 520
85	NUTR 45	883	45	85	32	30	55	1.1	0.6	53 200	74 100	29 925	57 950	9 215	1 330
90	NUTR 40 90	1 129	40	90	32	30	51	1.1	0.6	62 700	90 250	79 800	90 250	11 305	1 520
	NUTR 50	950	50	90	32	30	60	1.1	0.6	54 150	76 950	30 400	58 900	9 595	1 235
100	NUTR 45 100	1 396	45	100	32	30	55	1.1	0.6	67 450	101 650	100 700	101 650	12 635	1 330
110	NUTR 50 110	1 690	50	110	32	30	60	1.1	0.6	72 200	114 000	114 000	114 000	14 155	1 235

- The basic load ratings C and C_0 apply if the bearing outer ring (with cylindrical outside surface) is mounted in a housing bore with the normal rolling bearing fit.
when used as a track roller the load ratings C_w and C_{0w} apply.
- With oil lubrication, the speed can be increased by approx 30%.