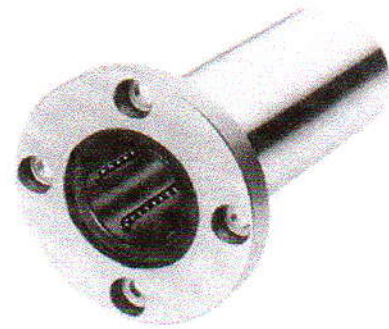


Linear bushing

Series LMF



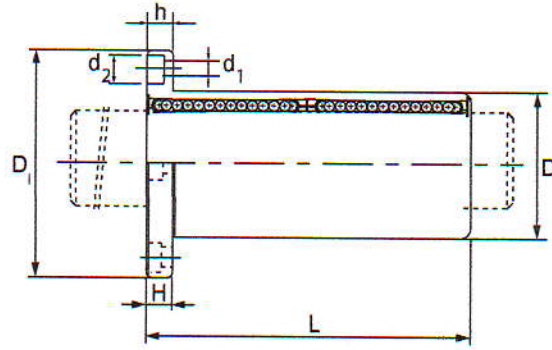
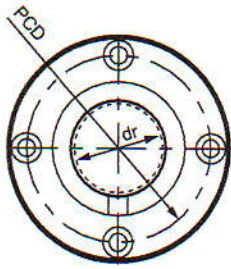
LMF

Dimension table . Dimension in mm

Cylindrical type Standard type	Number of ball rows	Weight g	Inscribed circle diameter		Outer diameter		Length		Flange diameter	
			dr	Tolerance	D	Tolerance	L	Tolerance	D1	Tolerance
LMF 6 L	4	32	6	0 -0.010	12	0	35	0 -0.3	28	0 -0.2
LMF 8 L	4	53	8		15	-0.013	45		32	
LMF 10 L	4	105	10		19	0	55		40	
LMF 12 L	4	100	12		21	0	57		42	
LMF 13 L	4	130	13		23	-0.016	61		43	
LMF 16 L	5	187	16		28	0	70		48	
LMF 20 L	5	260	20	0 -0.012	32	0	80	0 0.4	54	0 -0.3
LMF 25 L	6	515	25		40	-0.019	112		62	
LMF 30 L	6	655	30		45	0	123		74	
LMF 35 L	6	970	35	0 -0.015	52	0	135	0 0.4	82	0 -0.3
LMF 40 L	6	1560	40		60	-0.022	154		96	
LMF 50 L	6	3500	50		80	0	192		116	
LMF 60 L	6	4500	60		-0.020	90	-0.025		211	



- Linear bushing type LMF has a built-in synthetic resin retainer to reduce running noise.
- Specify when seal type is needed.



H	PCD	Mounting hole Ordered / WD $d_1 \times d_2 \times h$	Flang squareness μm	Eccentricity (Max) μm	Radial Clearance Tolerance μm	Basic Load rating	
						C N	C_0 N
5	20	3.4 X 6.5 X 3.1	15	15	-5	308	503
5	24	3.5 3.4 X 6.5 X 3.1	15	15	-5	409	745
6	29	4.5 X 8 X 4.1	15	15	-5	559	1 045
6	32	4.5 X 8 X 4.1	15	15	-5	624	1 140
6	33	4.5 X 8 X 4.1	15	15	-7	773	1 491
6	38	4.5 X 8 X 4.1	15	15	-7	1 168	2 232
8	43	5.5 X 9.5 X 5.1	20	20	-9	1 330	2 612
8	51	5.5 X 9.5 X 5.1	20	20	-9	1 482	2 983
10	60	6.6 X 11 X 6.1	20	20	-9	2 365	5 215
10	67	6.6 X 11 X 6.1	25	25	-13	2 517	5 956
13	78	9 X 14 X 8.1	25	25	-13	3 258	7 638
13	98	9 X 14 X 8.1	25	25	-13	5 776	15 105
18	112	11 X 17.5 X 10.8	25	25	-13	7 267	19 000

