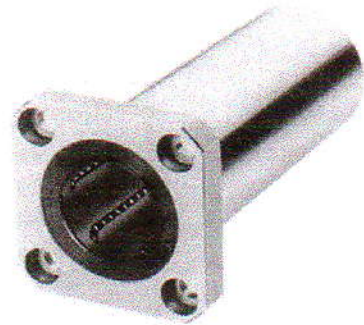


Linear bushing

Series LMK



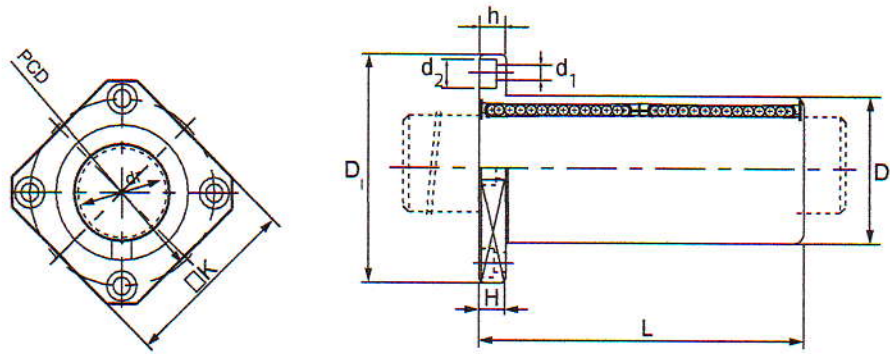
LMK

Dimension table . Dimension in mm

Cylindrical type Standard type	Number of ball rows	Weight g	Inscribed circle diameter		Outer diameter		Length		Flange diameter	
			dr	Tolerance	D	Tolerance	L	Tolerance	D1	Tolerance
LMK 6 L	4	26	6	0 -0.010	12	0	35	0 -0.3	28	0 -0.2
LMK 8 L	4	46	8		15	-0.013	45		32	
LMK 10 L	4	88	10		19	0	55		40	
LMK 12 L	4	82	12		21	0	57		42	
LMK 13 L	4	108	13		23	-0.016	61		43	
LMK 16 L	5	160	16	28	0	70	48			
LMK 20 L	5	230	20	0 -0.012	32	0	80	54		
LMK 25 L	6	475	25		40	-0.019	112	62		
LMK 30 L	6	575	30		45	0	123	74		
LMK 35 L	6	870	35	0 -0.015	52	0	135	82		
LMK 40 L	6	1380	40		60	-0.022	154	96		
LMK 50 L	6	3300	50		80	0	192	116		
LMK 60 L	6	4060	60		-0.02	90	-0.025	211	134	0 -0.3



- Linear bushing type LMF has a built-in synthetic resin retainer to reduce running noise.
- Specify when seal type is needed.



K	H	PCD	Mounting hole d1 X d2 X h	Flang squareness μ m	Eccentricity (Max) μ m	Radial Clearance Tolerance μ m	Basic Load rating	
							C N	C ₀ N
22	5	20	3.4 X 6.5 X 3.1	15	15	-5	308	503
25	5	24	3.4 X 6.5 X 3.1	15	15	-5	409	745
30	6	29	4.5 X 8 X 4.1	15	15	-5	559	1 045
32	6	32	4.5 X 8 X 4.1	15	15	-5	624	1 140
34	6	33	4.5 X 8 X 4.1	15	15	-7	773	1 491
37	6	38	4.5 X 8 X 4.1	15	15	-7	1 168	2 232
42	8	43	5.5 X 9.5 X 5.1	20	20	-9	1 330	2 612
50	8	51	5.5 X 9.5 X 5.1	20	20	-9	1 482	2 983
58	10	60	6.6 X 11 X 6.1	20	20	-9	2 365	5 215
64	10	67	6.6 X 11 X 6.1	25	25	-13	2 517	5 956
75	13	78	9 X 14 X 8.1	25	25	-13	3 258	7 638
92	13	98	9 X 14 X 8.1	25	25	-13	5 776	15 105
106	18	112	11 X 17.5 X 10.8	25	25	-13	7 267	19 000

