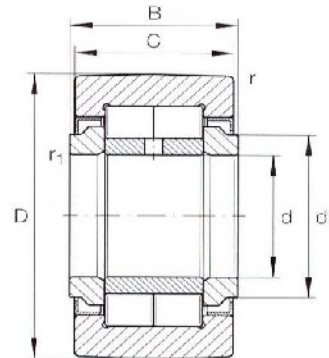
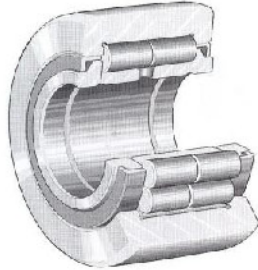




Yoke type track rollers



Dimension table . Dimensions in mm

Outside diameter	Designation	Mass ≈ g	Dimensions							Basic load rating				Fatigue limit load P_{um} N	speed ¹⁾ N_D grease min ⁻¹
			d	D	B	C	d_1	r min.	r_1 min.	dyn. C_w N	stat. C_{0w} N	$F_{r perm}$ N	$F_{or perm}$ N		
35	NUTR 15	99	15	35	19	18	20	0.6	0.3	14 250	15 960	8 170	15 960	2 109	6 175
40	NUTR 17	147	17	40	21	20	22	1.0	0.3	17 480	21 470	12 445	21 470	2 755	5 225
42	NUTR 15 42	158	15	42	19	18	20	0.6	0.3	17 195	20 805	20 805	20 805	2 755	6 175
47	NUTR 17 47	220	17	47	21	20	22	1.0	0.3	20 235	26 600	26 600	26 600	3 420	5 225
	NUTR 20	245	20	47	25	24	27	1.0	0.3	26 600	33 250	15 580	31 350	4 180	3 990
52	NUTR 20 25	321	20	52	25	24	27	1.0	0.3	29 925	38 950	36 575	38 950	4 940	3 990
	NUTR 25	281	25	52	25	24	31	1.0	0.3	27 550	35 625	16 435	32 775	4 465	3 230
62	NUTR 25 62	450	25	62	25	24	31	1.0	0.3	33 725	47 500	47 500	47 500	5 985	3 230
	NUTR 30	465	30	62	29	28	38	1.0	0.3	38 000	47 500	22 325	44 175	5 985	2 470
72	NUTR 30 72	697	30	72	29	28	38	1.0	0.3	45 125	60 800	60 800	60 800	7 695	2 470
	NUTR 35	630	35	72	29	28	44	1.1	0.6	42 275	57 000	30 400	57 000	7 220	1 995
80	NUTR 35 80	836	35	80	29	28	44	1.1	0.6	48 450	68 400	68 400	68 400	8 645	1 995
	NUTR 40	816	40	80	32	30	51	1.1	0.6	52 250	71 250	28 975	57 000	8 930	1 520
85	NUTR 45	883	45	85	32	30	55	1.1	0.6	53 200	74 100	29 925	57 950	9 215	1 330
90	NUTR 40 90	1 129	40	90	32	30	51	1.1	0.6	62 700	90 250	79 800	90 250	11 305	1 520
	NUTR 50	950	50	90	32	30	60	1.1	0.6	54 150	76 950	30 400	58 900	9 595	1 235
100	NUTR 45 100	1 396	45	100	32	30	55	1.1	0.6	67 450	101 650	100 700	101 650	12 635	1 330
110	NUTR 50 110	1 690	50	110	32	30	60	1.1	0.6	72 200	114 000	114 000	114 000	14 155	1 235

- The basic load ratings C and C_0 apply if the bearing outer ring (with cylindrical outside surface) is mounted in a housing bore with the normal rolling bearing fit.
when used as a track roller the load ratings C_w and C_{0w} apply.
- With oil lubrication, the speed can be increased by approx 30%.